



Multiple Application Platform Server

MAPS 5.1 Release Guide

Document version 5.1

Last updated 6/28/2016

Trademark, Publishing Statement, and Copyright Notice

© 1998-2016 Evisions, Inc. All rights reserved.

This software and related documentation are provided under a license agreement containing restrictions on use and disclosure and are protected by intellectual property laws. No part of this document may be reproduced, stored in or introduced into a retrieval system, or transmitted in any form or by any means (electronic, mechanical, photocopying, recording, or otherwise), or for any purpose, without the express written permission of Evisions, Inc.

The information contained herein is subject to change without notice and is not warranted to be error-free. Product features referenced herein for a period of time may not match product contents. Evisions, Inc. does not warrant that the functions contained in the software will meet your requirements or that the operation of the software will be uninterrupted or error free. Evisions, Inc. reserves the right to make changes and/or improvements in the software without notice at any time.

This software and documentation may provide access to or information on content, products, and services from third parties. Evisions, Inc. and its affiliates are not responsible for and expressly disclaim all warranties of any kind with respect to third-party content, products, and services. Evisions, Inc. and its affiliates will not be responsible for any loss, costs, or damages incurred due to your access to or use of third-party content, products, or services. Evisions, Inc. does not endorse the content or developer of any products or web sites mentioned.

All information in this guide is designed for instructional purposes only. Evisions, Inc. makes no guarantees regarding the accuracy or performance of any techniques used in this guide. Software configurations and environments may vary, and some techniques used in this guide may not operate efficiently under all configurations. This guide may contain examples of various technologies or products, which are the sole property and responsibility of their creators.

Trademarks are the property of the respective owners for any products mentioned herein.

Table of Contents

Table of Contents	3
What's New in MAPS 5.1?	4
MAPS Updates	4
Product versions	4
Installation	4
1. Prepare test environment and ensure current backup	4
2. Check for updates	4
3. Allow update process to complete	5
4. Verify the latest version is installed	5
All Users	6
eLauncher Updates	6
MAPS Administrators	7
Native Database Drivers	7
Configuring the Native Drivers	7
LDAP Group Authentication with CAS	9
User Improvements - Import/Export	9
New File Format	9
Import/Export	11
MAPS 5.1 Release Notes	16
Enhancements	16
Resolved Issues	17
Getting Help	18

What's New in MAPS 5.1?

Evisions is pleased to announce the release of MAPS version 5.1, which includes the following changes:

- The eLauncher has been redesigned to better reflect the new Evisions brand look and feel and make it easier to navigate.
- Added support for native Oracle and SQL Server drivers as an alternative to ADO connections for these databases. The native drivers may result in improved performance and stability.
- Added support for LDAP group authentication when logging in through CAS.
- Improved the user import function by adding several fields, and added a user export feature.
- Added several fields to the Data Warehouse, including users' start/stop dates and DeleteOnStop property, and the printer name for scheduled print tasks.
- Additional enhancements and resolved issues.

We appreciate the feedback received from all of our users. Our products would not be what they are today without your continued support. If you have any comments or suggestions, please do not hesitate to [open a HelpDesk ticket](#) and let us know.

MAPS Updates

MAPS 5.1 is an update to the MAPS service (which includes the eLauncher) and the MAPS Configuration tool. You should upgrade both components concurrently.

[Product versions](#)

The latest versions of MAPS included in this release are:

- MAPS service 5.1.0.1290 / MAPS configuration 5.1.0.581/ eLauncher 5.1.0.14

Installation

[1. Prepare test environment and ensure current backup](#)

We highly recommend installing updates in a test environment before applying them to your production environment. You should make sure that a current backup is available in case of any unforeseen issues. To create a full backup of your MAPS environment, go to the **Server** -> **Backups** screen in MAPS and click **Backup Now**.

[2. Check for updates](#)

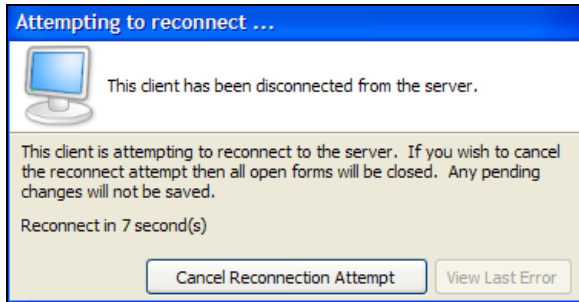
Click the **Check for Updates** button in the MAPS Configuration tool to view available updates.

If you are not already running MAPS 4.x, please refer to the [MAPS 4.0 Upgrade Guide](#) for instructions prior to proceeding with this upgrade.

It is possible to apply updates when users are on the system; however, to avoid the possibility of losing unsaved work we recommend applying updates during off hours.

[3. Allow update process to complete](#)

When applying updates to the MAPS service you will be temporarily disconnected from the server:



The update process may take a few minutes to complete. **Do NOT cancel the reconnection attempt or manually restart the server.** You will automatically be reconnected to the server once the update has been applied.

[4. Verify the latest version is installed](#)

To ensure that you are on the most current version, continue clicking the **Check for Updates** button and applying the updates until no new updates are available.

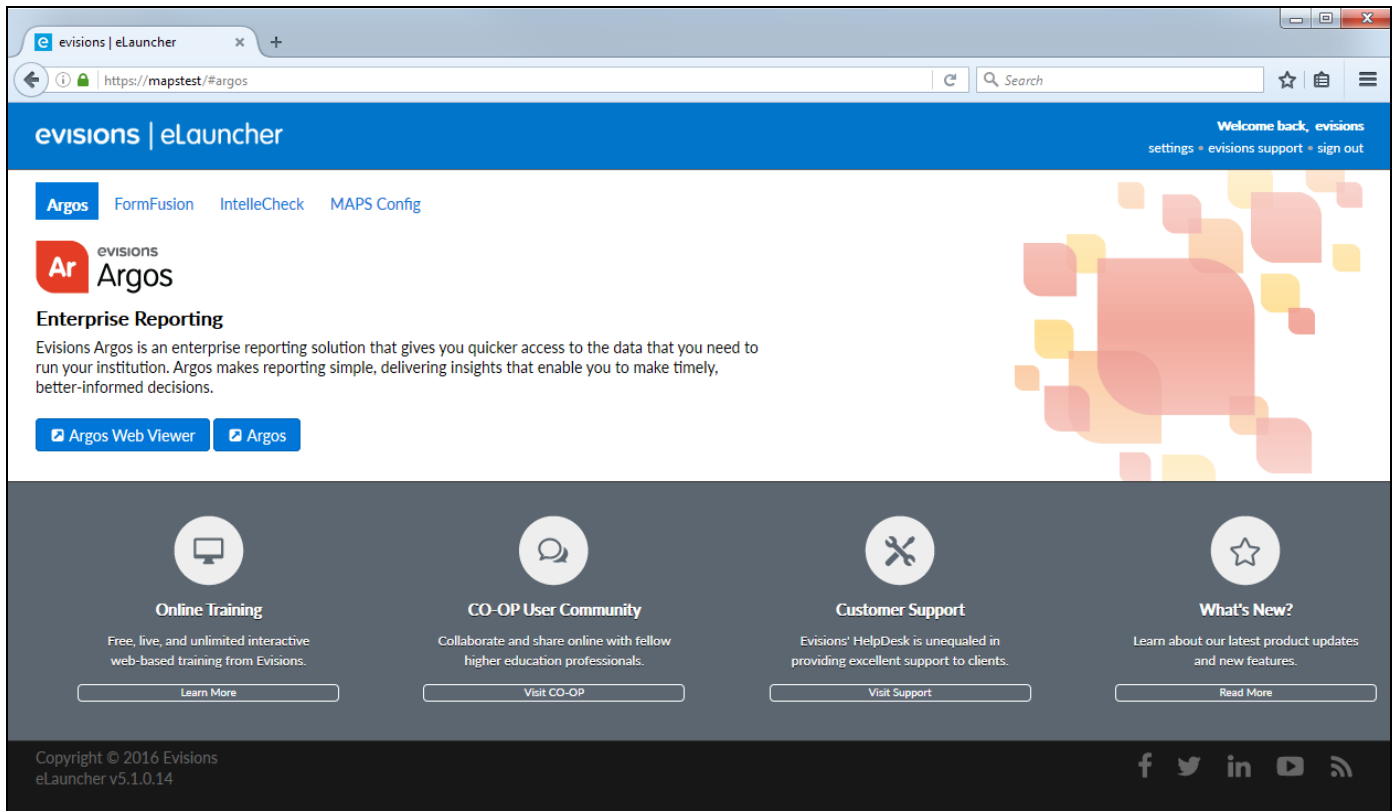
[Please Provide Us with Your Feedback!](#)

As always, we welcome any [feedback or suggestions](#) you may have. We very much appreciate your thoughts and suggestions, so please keep the great ideas coming!

All Users

eLauncher Updates

The eLauncher has been updated with a new look and feel, in line with the updates to Argos and the Evisions website. We have also updated the Evisions logo and the logos for all Evisions products.



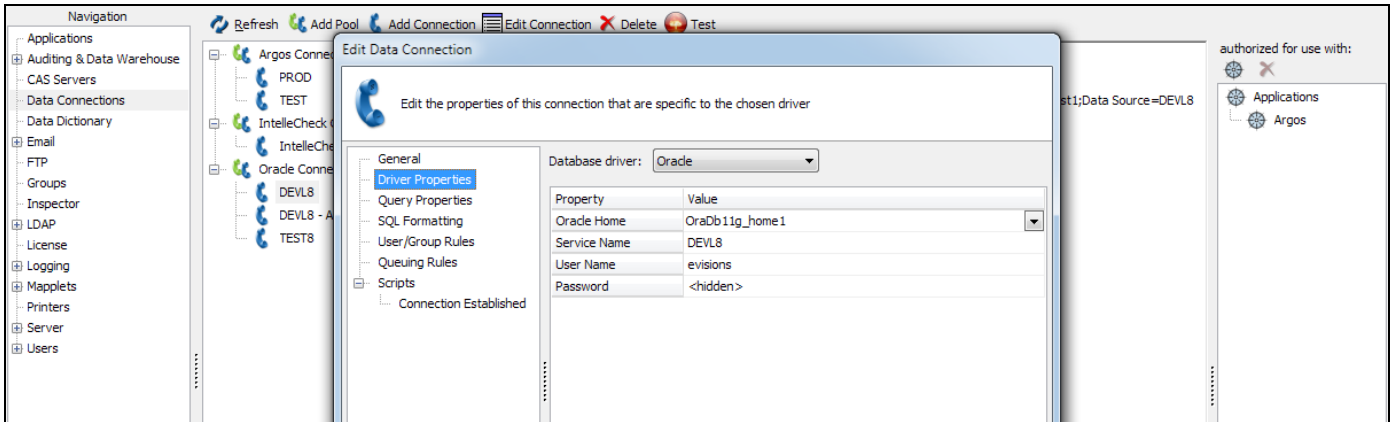
There are no changes to the functionality of the eLauncher. If your MAPS server is configured to use a custom logo and color theme for the eLauncher, your customizations will remain in place.

MAPS Administrators

Native Database Drivers

In addition to ADO connections, MAPS now also supports using native database drivers for Oracle and SQL Server, which may improve performance and stability when using these databases.

The ADO Connection screen in MAPS has been renamed to "Data Connections", and a new Driver Properties tab has been added to the Edit Connection dialog.

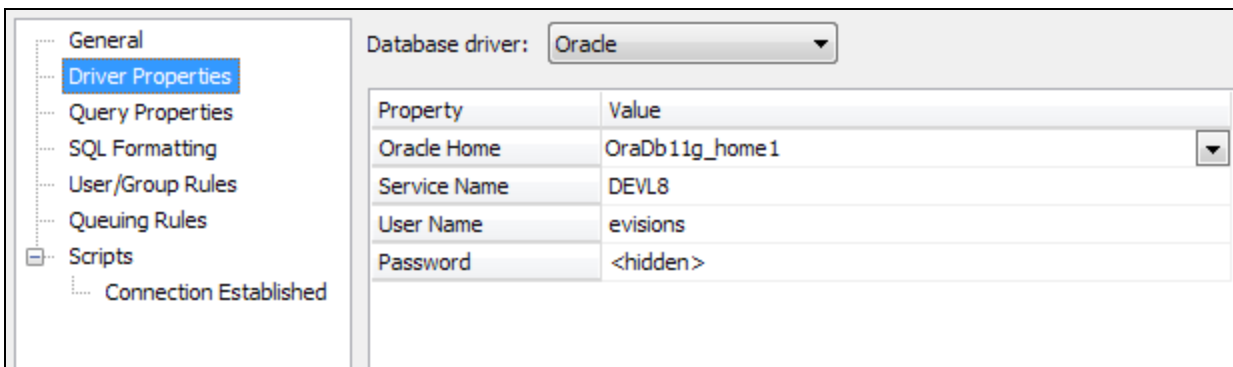


The Driver Properties tab lets you choose between the Oracle driver, SQL Server driver, or ADO. When using a database other than Oracle or SQL Server, the database driver should be left as "ADO". You may also continue to use an ADO connection for Oracle or SQL Server if desired.

Configuring the Native Drivers

On the Driver Properties tab, select either the Oracle or SQL Server database driver. Then, fill out the rest of the properties depending on which driver you are using.

When selecting Oracle as the database driver, enter the Oracle Home you wish to use, or leave it set to <default> if your server has only one Oracle Home. The Service Name is the name of the Oracle database you wish to use.



When selecting MSSQL as the database driver, enter the name of the server and database that you wish to use.

Property	Value
Server	EVISQL
User Name	evisions
Password	<hidden>
Database	Helpdesk

For either driver, you can opt to specify a username and password at the connection level, or leave it blank depending on how you decide to configure your user/group rules later on. The most basic method of connection is to enter a username and password here that all users who use this connection will use to access the database.

The remainder of the Data Connection properties are configured in the same manner as for ADO connections. In particular, you must select the correct options on the SQL Formatting tab in order for queries to execute correctly.

SQL Format: ANSI SQL-92

Join Options:

- Oracle Style (+) Joins
- Standard ANSI Style Joins

Alias Options:

- Define Aliases using the AS keyword
- Surround Alias with the following character: Double Quote ("name")

Table Expansion:

- Format: Full Ex. Catalog.Schema.TableName

Delimited Identifier:

- Quotes ("name")

Miscellaneous:

- Remove line comments
- Remove block comments
- Perform variable inline substitutions

Buttons: OK, Cancel

LDAP Group Authentication with CAS

MAPS now supports LDAP group authentication for CAS users. This allows you to add your [LDAP groups](#) to MAPS, and have your CAS users authenticate based on membership in these groups.

In order to use this feature, you will need to add the [groups](#) attribute to your CAS server, in addition to the [CN](#) and [DN](#) attributes that are required to access your LDAP server. For assistance with adding attributes, please refer to the [CAS documentation](#). You can also refer to their [tutorial on Active Directory authentication with CAS](#).

MAPS expects an XML response from the server in the following format:

```
<cas:serviceResponse xmlns:cas='http://www.yale.edu/tp/cas'>
  <cas:authenticationSuccess>
    <cas:user>MyUser</cas:user>
    <cas:groups>[CN=MyGroup,OU=Groups,DC=Test,DC=Local,
CN=MyGroup2,OU=Groups,DC=Test,DC=Local]</cas:groups>
  </cas:authenticationSuccess>
</cas:serviceResponse>
```

Note: If a user is a member of more than one group, the groups should be separated by a space.

After adding the LDAP group information to your CAS users, the only configuration you need to do in MAPS is to add your LDAP groups and assign appropriate permissions to each group. For users logging in with CAS, MAPS will automatically detect the group membership information from the CAS server and grant them the appropriate permissions for their LDAP group(s).

Note: CAS authentication currently does not work for users who are members of nested LDAP groups.

Troubleshooting Tip: You can look at the debug log in MAPS while attempting to log in through CAS to verify that the response from the CAS server is in the correct format.

Existing LDAP Users Who Have CAS IDs in MAPS

If your institution is already using CAS, you may have some number of LDAP users who have been added to MAPS with their associated CAS IDs. If these users exist in MAPS only for purposes of associating the CAS ID with their username, feel free to remove these users from MAPS once they can authenticate via their group membership.

If you do not wish to remove these users, or if they must be added to MAPS individually due to additional permissions granted on an individual basis, you should continue to enter the CAS Identifier in MAPS for these users. In the event that your institution has more than one LDAP server, this will ensure that only the correct user is given permissions if different users on different LDAP servers happened to share the same LDAP username.

User Improvements - Import/Export

The Import function has been updated to include several new fields, including the CasID, and the email address for LDAP users. We have also implemented an export function to allow you to save a list of users to a CSV file.

New File Format

Previously, the import file format differed depending on whether you were importing MAPS users or LDAP users. With the new format, each row contains the same fields regardless of the user type. The CSV file can contain up to 24 available fields, in any order. The first row of the file must contain the headers that identify the fields. If you do not have data for a particular field, it can be left blank and updated later. Some fields, such as the GUID and last logon date, cannot be updated via the import file as they contain system-defined information. Other fields will necessarily be blank, such as the LdapDN for a MAPS user, or CasID if your institution does not use CAS.

Sample CSV file

Field Descriptions

Name - The username for this user. One word. Required for new users; may use the GUID field instead or in addition to the Name field when updating existing users.

Description - A short description of this user. Optional. Use double quotes around this field to allow it to contain multiple words.

GUID - A system-created ID that uniquely identifies this user. When importing users, this field can be used to update an existing username since the import function looks for a GUID first. If a matching GUID is found, the username for that GUID will be updated. If the GUID is blank, MAPS will attempt to match existing users based on the Name field instead. This field cannot be updated from the import file, since it is a unique key for each user which cannot be modified.

EmailAddress - The email address of a MAPS user. This field can be left blank for LDAP users, unless you wish to override their LDAP email address.

Priority - The queue priority for queries run by this user. Lowest/Lower/Normal/Higher/Highest. The default of "Normal" will be used if this field is blank or contains an invalid string.

Disabled - A Boolean Yes/No indicating whether or not this user is disabled in MAPS due to entering a bad password multiple times, or the date for final use passing. This field cannot be updated from the import file.

CreatedBy - The name of the user who created this user. This field cannot be updated from the import file. For new users, the CreatedBy user will be the user who is performing the import.

CreatedDate - The date this user was created. This field cannot be updated from the import file. For new users, the CreatedDate will be the date they were imported into MAPS.

ModifiedDate - The date this user was last modified. This field cannot be updated from the import file. For new users, the ModifiedDate will be the date they were imported into MAPS.

LastLogonDate - The date this user last logged in to the system. This field cannot be updated from the import file. This field will be null until the user logs in for the first time.

CasID - The CAS identifier for this user, if your institution uses CAS. Should be blank otherwise.

Notes - Optional field for any internal notes pertaining to this user. Use double quotes around this field to allow it to contain multiple words. The Notes field is only visible to MAPS administrators.

StartDate - Optional date which will be the first date that this user is able to log in. Leave blank to have the user be able to log in immediately. **Format: yyyy-mm-dd.**

StopDate - Optional last date that this user will be able to log in. Useful when it is known that a given user will be leaving on a specific date, after which they should no longer be allowed to log in. **Format: yyyy-mm-dd.**

DeleteOn - Boolean Yes/No indicating whether the user should be deleted after the StopDate passes. Defaults to "No".

Source - Either "MAPS" or "LDAP". Required for new users.

Password - This field is required when creating a new MAPS user, to set their initial password. You can also use it as an optional field to update passwords for existing MAPS users. (Note: LDAP and CAS passwords cannot be changed through MAPS.) It is highly recommended to set the PasswordMustChange field to "Yes" when entering passwords on behalf of a user. The Password field is blanked out when exporting users from MAPS, but the column is kept as a placeholder.

PasswordMustChange - Boolean Yes/No indicating whether the user is required to change their password the next time they log in. Only applies to MAPS users. It is highly recommended to set this to "Yes" whenever creating initial passwords for MAPS users. Defaults to "Yes" if left blank for new users.

PasswordNeverExpire - Boolean Yes/No that prevents the user's password from expiring after a period of time, if the password policy would otherwise require periodic password changes.

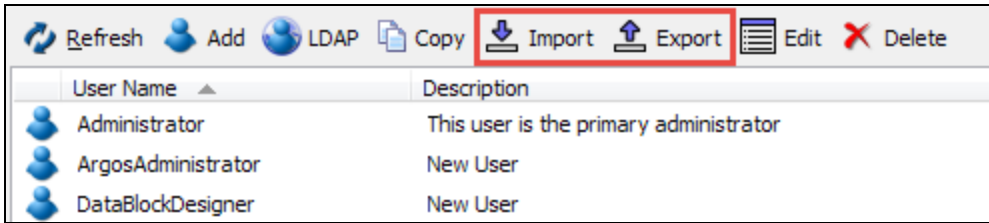
LdapDN - The DN of this user, if they are an LDAP user. This field should be left blank for MAPS users.

LdapEmailAddressOverride - Boolean Yes/No indicating whether an LDAP user should use the email address specified in MAPS instead of their LDAP email address. This field should be left blank for MAPS users.

LdapLogon - The LDAP name of an LDAP user. This field should be left blank for MAPS users.

LdapServer - The name of the LDAP server, as defined on the LDAP -> Servers screen in MAPS. This field should be left blank for MAPS users.

Import/Export

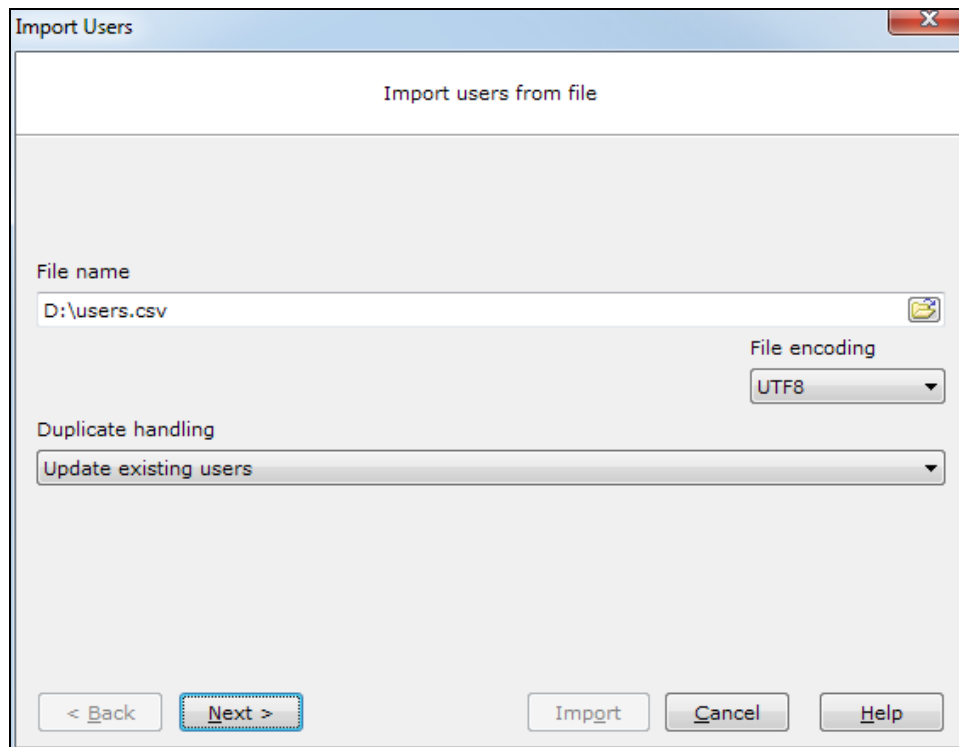


Importing Users

The **Import** button allows you to bring in a CSV file containing a list of usernames. This can save time if you want to create a lot of MAPS users at once.

When importing users, you have the option to add all of the users in the import file to certain MAPS groups, or to assign one or more user roles to them. If you will be importing a large number of users, it may be helpful to create separate import files based on group membership and roles. For example, you could have all of your report viewers in one file, and all of your report writers in another. This would allow you to assign the user roles all at once, instead of needing to go in and assign individual permissions later. You could then choose to import a list of all users who are in the HR department, and assign them to the HR group. If you use the "Update existing users" option, this would assign all users in the new file to the HR group, including any users who had already been added to MAPS from one of the previous import files. This gives you a large amount of flexibility in planning your user configuration, since you can create lists of users and import them as needed to add additional permissions.

Click the **Import** icon at the top of the screen to bring up the **Import Users** dialog box.

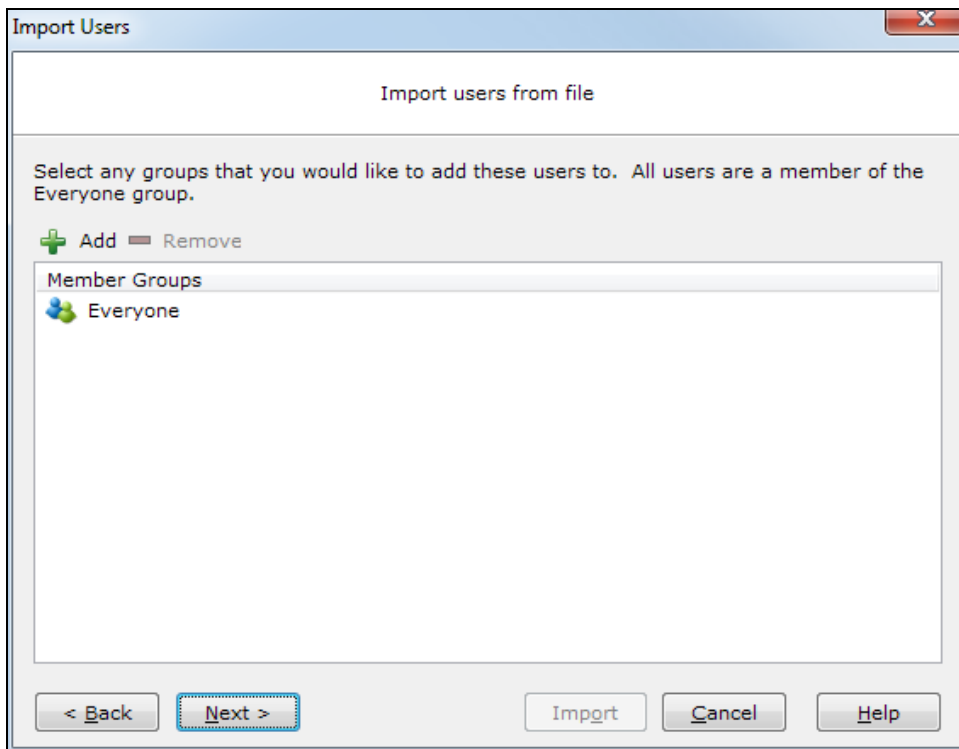


Browse for the file to import. The file encoding defaults to UTF-8, but you can also choose to import an ASCII file.

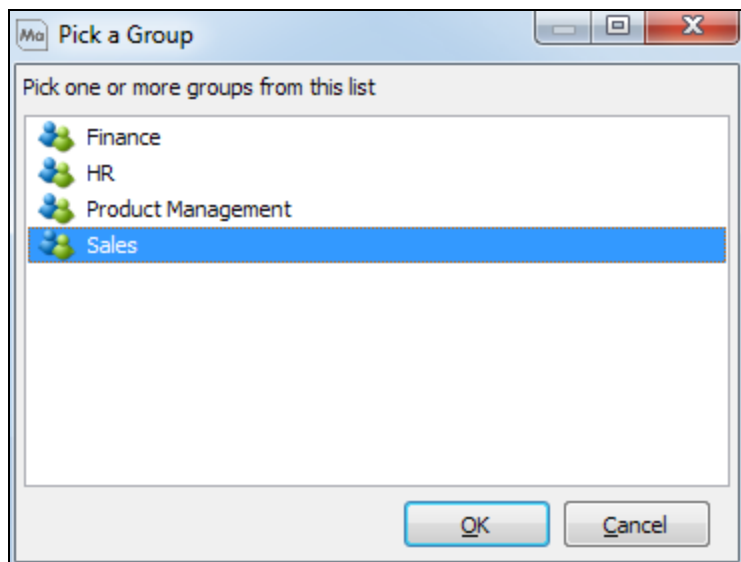
You can also specify how any duplicate users should be handled:

- **Update existing users** - any usernames in the file that match existing users will update the information for those users.
- **Do not create or update duplicate users** - ignores duplicate users without updating them.
- **Import duplicate users with a unique name** - Appends a number to the end of any usernames that are duplicates, to allow the import to proceed without overwriting any existing users. For example, a duplicate of the user 'jsmith' would become 'jsmith1'.

After clicking **Next**, you will be able to choose which groups these users should be added as a member of. By default, all users are added to the system group called "Everyone".

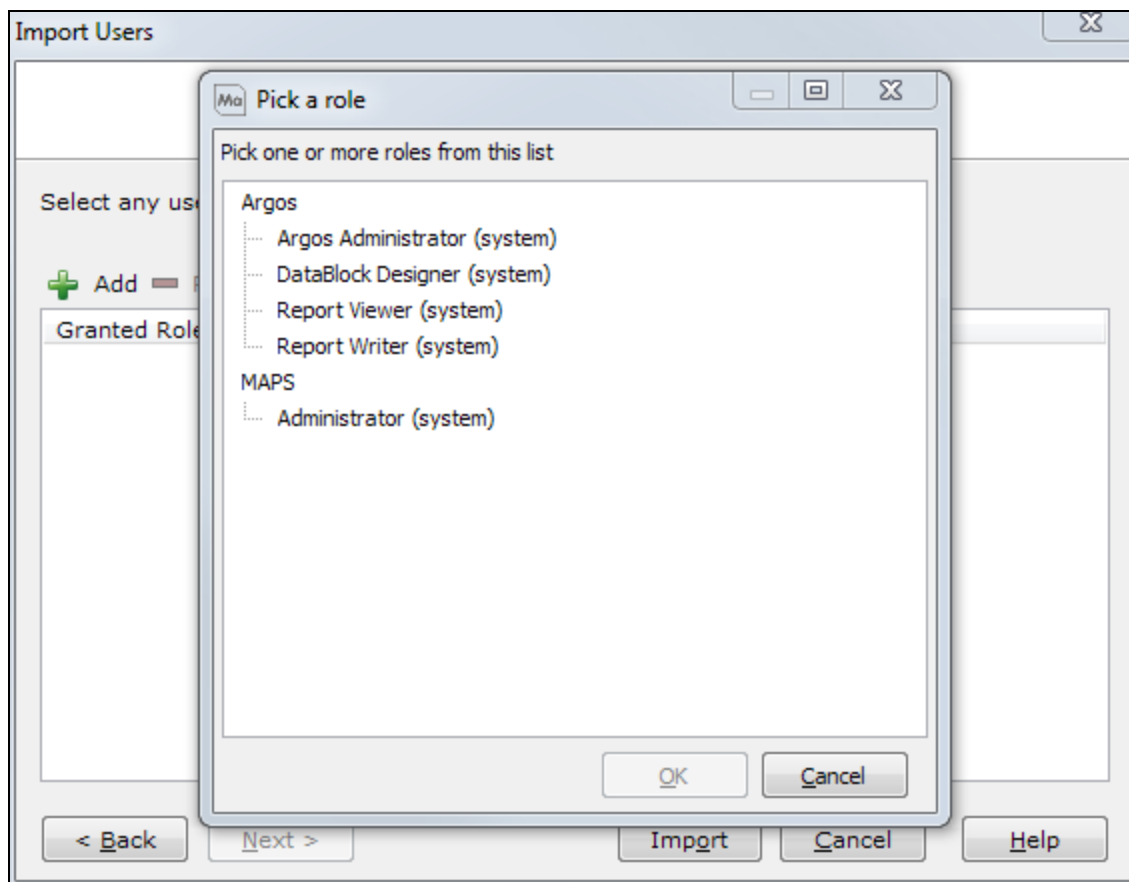


Select the **Add** button to choose additional groups:

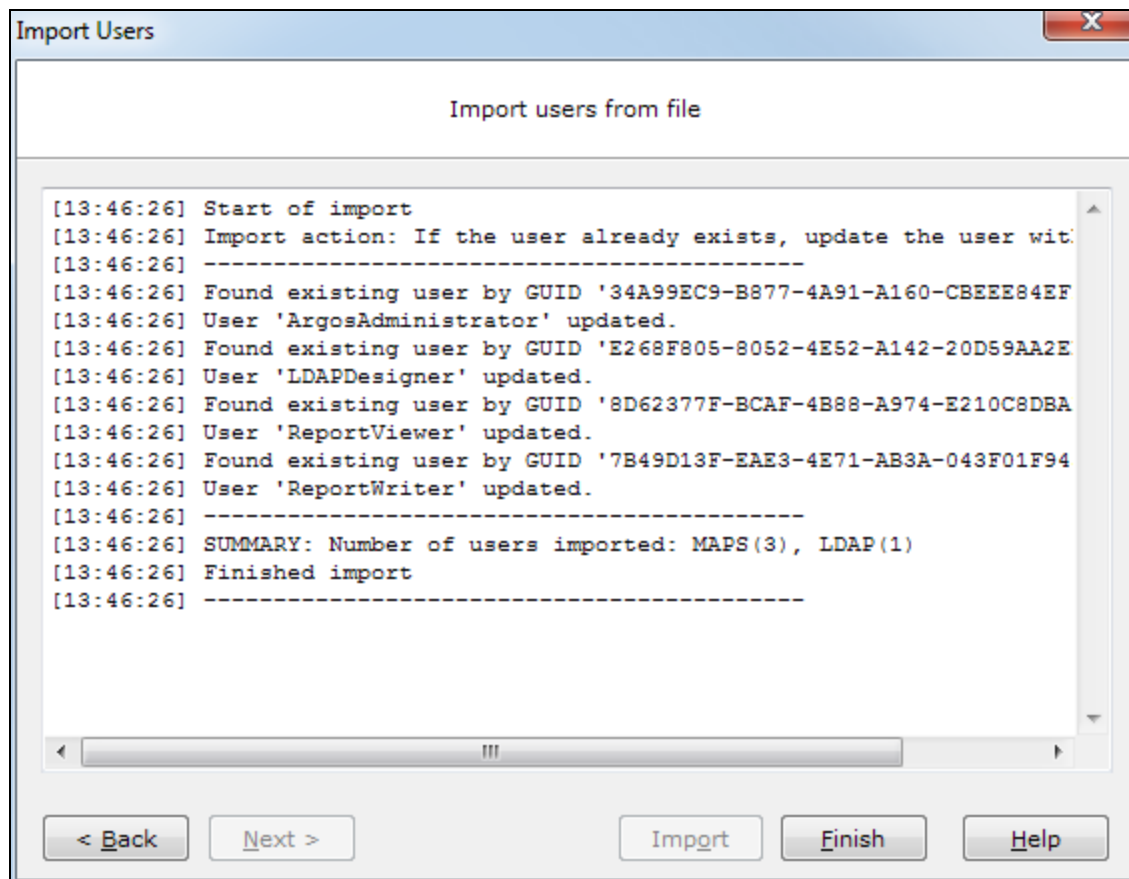


Click **Next** to proceed.

The last step is to select which user role(s), if any, should be given to these users. User roles in MAPS only apply to MAPS (for MAPS administrators) and Argos (for Report Viewers/Writers, DataBlock Designers, and Argos Admins). Select the Add button if you wish to grant one or more user roles to all of the users in the import file:



Select the desired user roles, then click **OK**. Then, click **Import** to proceed with importing the users.



The results of the import operation will appear on the screen. If needed, you can copy this information into a text editor or other program for review.

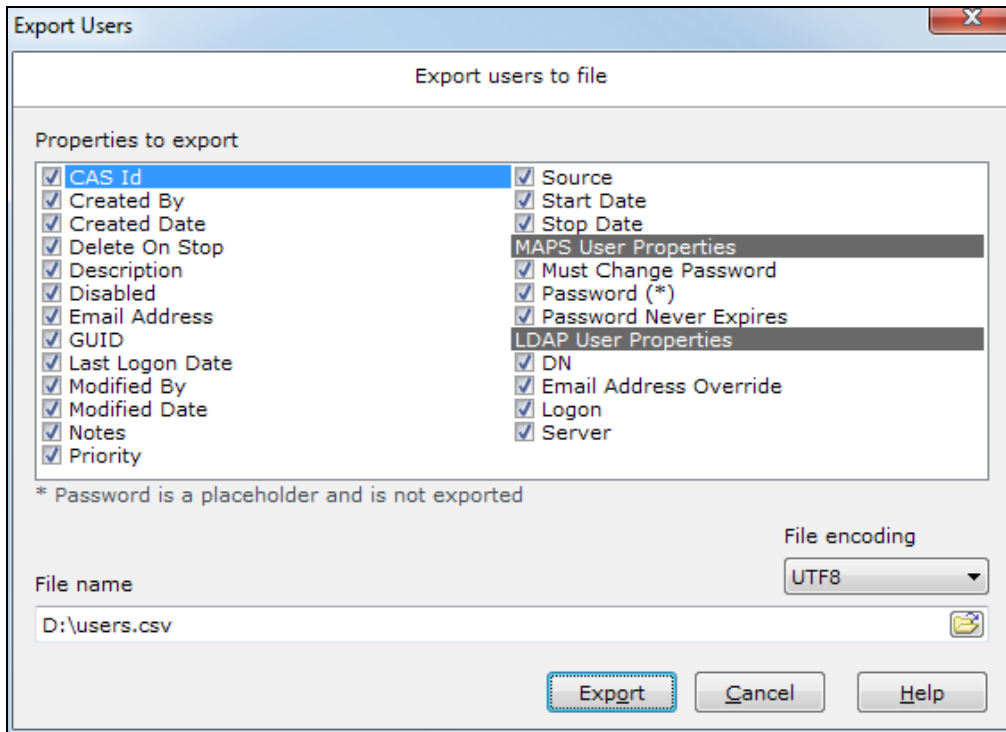
Note:

If you make a mistake during the import process, you can correct any bad information in the import file and then import it again using the update function. If you import users unintentionally, however, you will need to manually delete these users as there is not an "undo" function for the import process.

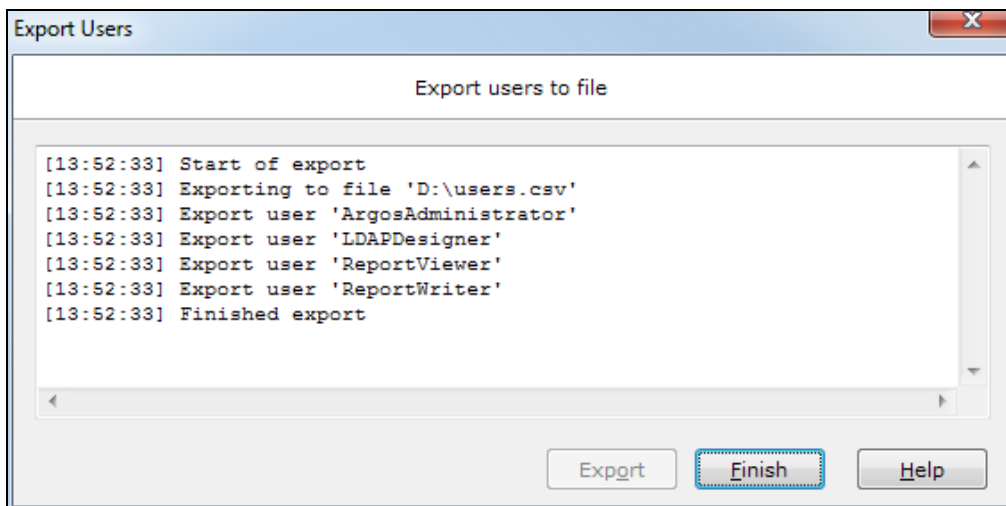
Exporting Users

The Export function can be used to generate a list of users; to copy users from one MAPS server to another; to make batch edits to multiple users at once (by exporting and re-importing); or for any other purpose where you need a list of users and/or their properties in an external file.

To export users to a CSV file, select the **Export** button at the top of the screen. Then, choose which fields you want to include in the export file.



Enter the desired filename and path, then select **Export**. The export log will appear on the final screen, showing progress and indicating any errors. If desired, you can copy the output to a text editor or other program.



Select **Finish** when you are done reviewing the log.

MAPS 5.1 Release Notes

MAPS Service 5.1.0.1290 / MAPS Configuration Tool 5.1.0.581/ eLauncher 5.1.0.14

Enhancements

Area	Description	Issue number
CAS	Added support for using LDAP group authentication when logging in through CAS, based on additional attributes supplied by the CAS server that contain the LDAP group information.	MAPS-80
Connections	In addition to ADO connections, MAPS now also supports using native database drivers for Oracle and SQL Server, which may improve performance and stability when using these databases. The ADO Connection screen in MAPS has been renamed to "Data Connections", and a new Driver Properties tab has been added to the Edit Connection dialog. When using a database other than Oracle or SQL Server, the database driver should be left as "ADO". You may also continue to use an ADO connection for Oracle or SQL Server if desired.	MAPS-1021
Data Warehouse	Added the StartDate, StopDate, and DeleteOnStop fields to the SysUser table in the Data Warehouse.	MAPS-1084
Data Warehouse	Added printer information for scheduled print tasks to the Data Warehouse via the ScheduleTaskProperty table. Print tasks now have an entry with ScheduleTaskProperty.Name set to "Printer" and the printer name in ScheduleTaskProperty.Value.	MAPS-1128
eLauncher	The DataMasque product will now only appear in the eLauncher if an institution has installed DataMasque.	MAPS-1150
eLauncher	The Evisions Application Launcher (EAL) is now the default launcher for new installations of MAPS. This avoids any issues with being unable to launch the MAPS Config when using browsers that no longer support Java.	MAPS-1119
eLauncher	Added a note to the Launch Page screen regarding color contrast accessibility when using custom color themes.	MAPS-1151
eLauncher	Updated the default theme for the eLauncher to use the new Evisions logo and brand colors. If you have configured a custom color theme or logo, these customizations will be retained.	MAPS-1053
eLauncher	Updated the link to the online training in the eLauncher to point to the new training page on the Evisions website.	MAPS-1178
Security	Improved the security of the session cookie used by the eLauncher and Argos Web Viewer by setting the "Secure" and "HTTPOnly" flags. These flags prevent the session information from being transmitted over an unencrypted channel or from being improperly accessed using JavaScript.	MAPS-812
Security	Updated MAPS to support version 1.0.1s and higher of OpenSSL. The latest version of OpenSSL that could be used with MAPS 5.0 and earlier was version 1.0.1r.	MAPS-1117
Security	Updated the OpenSSL .dll files packaged with MAPS to version 1.0.1t.	MAPS-1142

Area	Description	Issue number
Users	Expanded the user import function to include several additional fields, such as the email address for LDAP users (previously only available for MAPS users), and the CAS ID. MAPS administrators can now re-import a user whose information has changed in order to update their record. We also added an Export function that exports the selected users to a CSV file for future import or other purposes. The export function allows administrators to choose which fields should be included in the file.	MAPS-530
User interface	Updated the MAPS logo on the Server screen and at the top of the MAPS Config to be consistent with the new Evisions branding.	MAPS-1168

[Resolved Issues](#)

Area	Description	Issue number
CAS	When an LDAP user in MAPS was configured such that the user could log in with an associated CAS ID, and the user received permissions based on their group membership, the user was not granted any permissions that came from their group membership when logging in via CAS.	MAPS-898
Licensing	On the License -> Configuration screen, the client count was showing as "10000" when it should have been "unlimited".	MAPS-1114
Log files	When sending emails that included PDF attachments from FormFusion, the MAPS email log was omitting information such as the subject, content type, date, and body.	MAPS-1102

Getting Help

For information on using the software, please refer to the in-product Help, which contains detailed information on all aspects of the product.

If you are having problems with the installation or configuration, you can search our knowledge base of common issues and their resolutions at <http://helpdesk.evisions.com>. If you are unable to find the solution, submit a HelpDesk request with a detailed explanation of the problem you are experiencing.

Please do not hesitate to contact the Evisions HelpDesk if any questions or problems arise. We are here to help you and want to ensure your success.

If you find that areas of this documentation could benefit from additional detail or clarification, please let us know. We are constantly trying to improve the installation process to make it as easy as possible.